

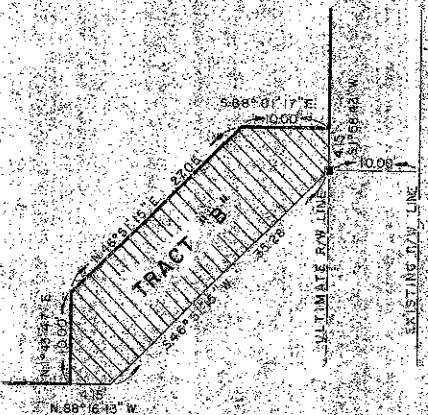
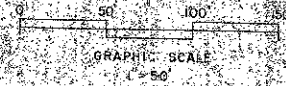
40-125

**FOXWOOD ESTATES PLAT NO. 3**  
**OF LAKESIDE GREEN (PUD)**  
 LYING IN SECTION 13, TOWNSHIP 43 SOUTH, RANGE 42 EAST,  
 COUNTY OF PALM BEACH, STATE OF FLORIDA.  
 IN 2 SHEETS SHEET NO. 2

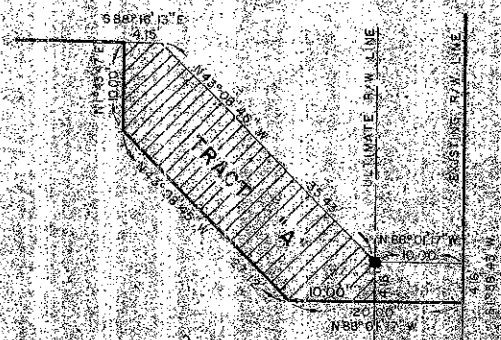
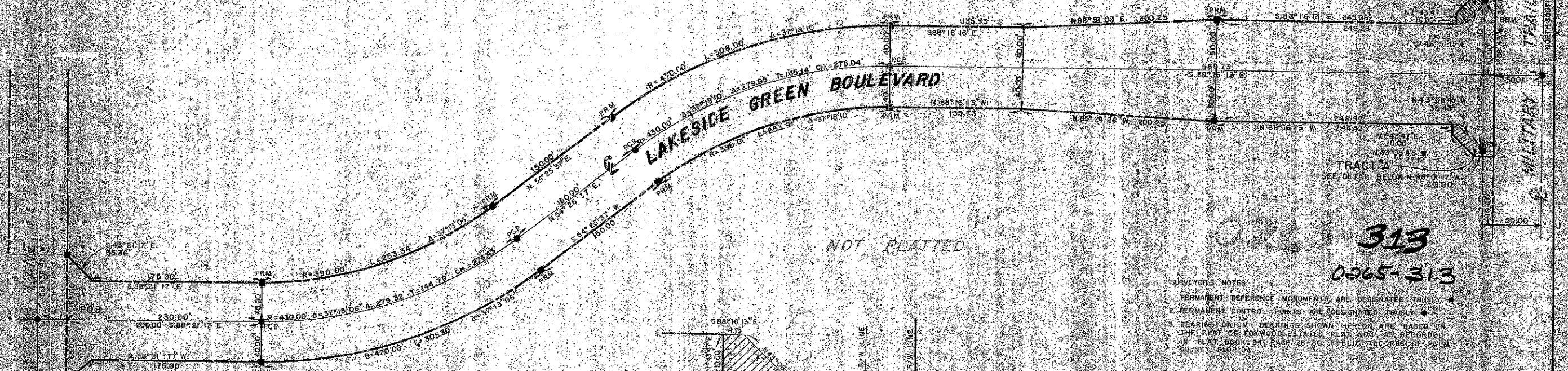
125

STATE OF FLORIDA  
 COUNTY OF PALM BEACH  
 This plan was filed for record on \_\_\_\_\_ M.  
 this \_\_\_\_\_ day of \_\_\_\_\_  
 19\_\_\_\_ and duly recorded in Plat Book No. \_\_\_\_\_  
 of Page \_\_\_\_\_  
 JOHN S. DUNKLE, Clerk Circuit Court  
 By \_\_\_\_\_ D.C.

N



NOT PLATTED



023 313  
 0065-313

**SURVEYOR'S NOTES**  
 1. PERMANENT REFERENCE MONUMENTS ARE DESIGNATED THUS: \*  
 2. PERMANENT CONTROL POINTS ARE DESIGNATED THUS: ●  
 3. BEARING DATUM BEARINGS SHOWN HEREON ARE BASED ON THE PLAT OF FOXWOOD ESTATES PLAT NO. 1 AS RECORDED IN PLAT BOOK 34, PAGE 28-30, 1981 REC'D. OF PALM BEACH COUNTY, FLORIDA.

FOXWOOD ESTATES PLAT-3  
 PALM BEACH COUNTY, FLORIDA  
 IN 2 SHEETS SHEET NO. 2

ROSSI AND MALAVAST SURVEYORS, INC. WEST PALM BEACH, FLORIDA		FOXWOOD ESTATES PLAT-3 PALM BEACH COUNTY, FLORIDA IN 2 SHEETS SHEET NO. 2	
Prepared by: JRS	Checked by: JRS	Designed by: ALAN LAMBERT	Drawn by: JRS
Date: 12/15/11	Date: 12/15/11	Date: 12/15/11	Date: 12/15/11
Sheet: 2	Sheet: 2	Sheet: 2	Sheet: 2